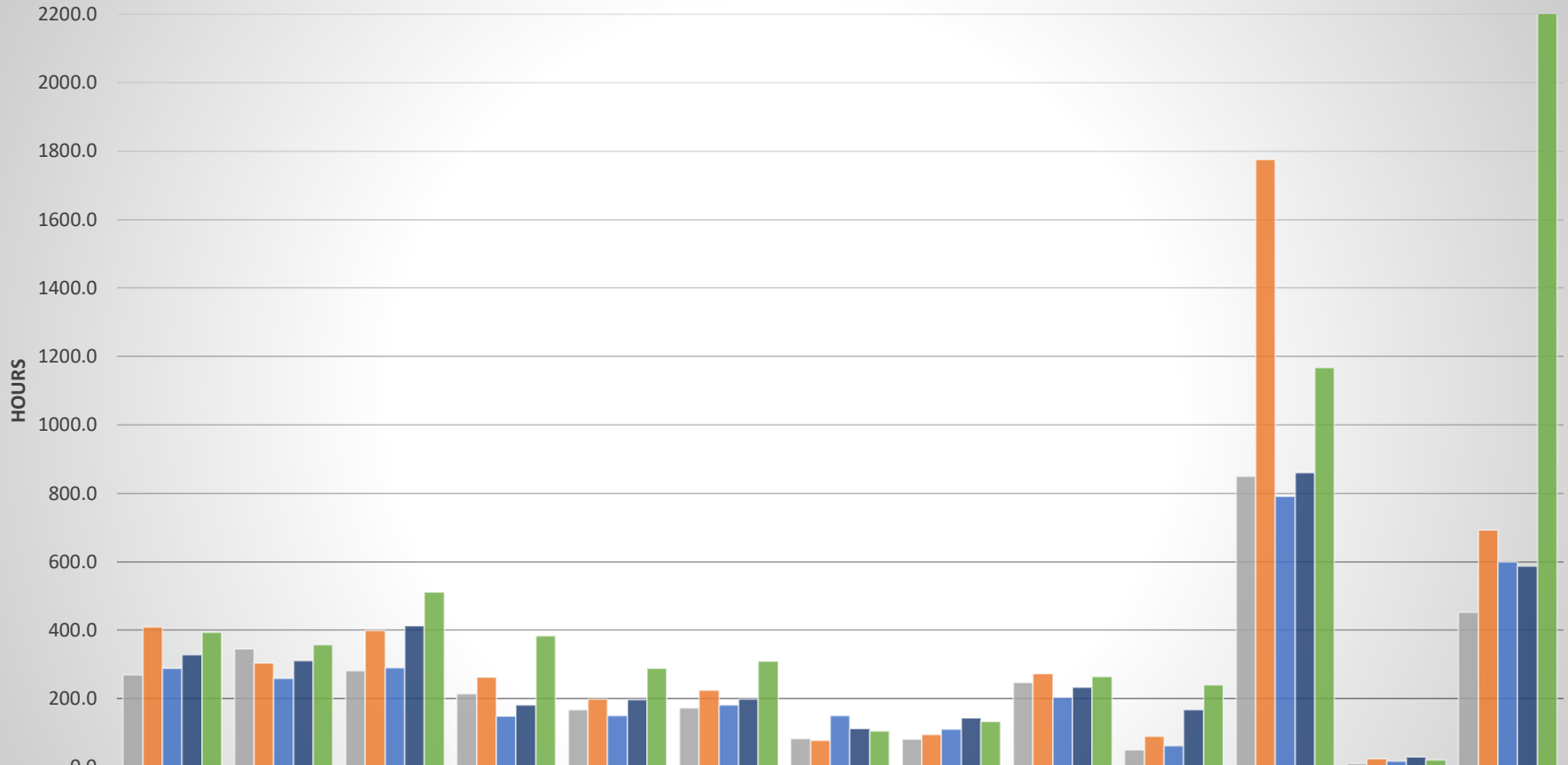


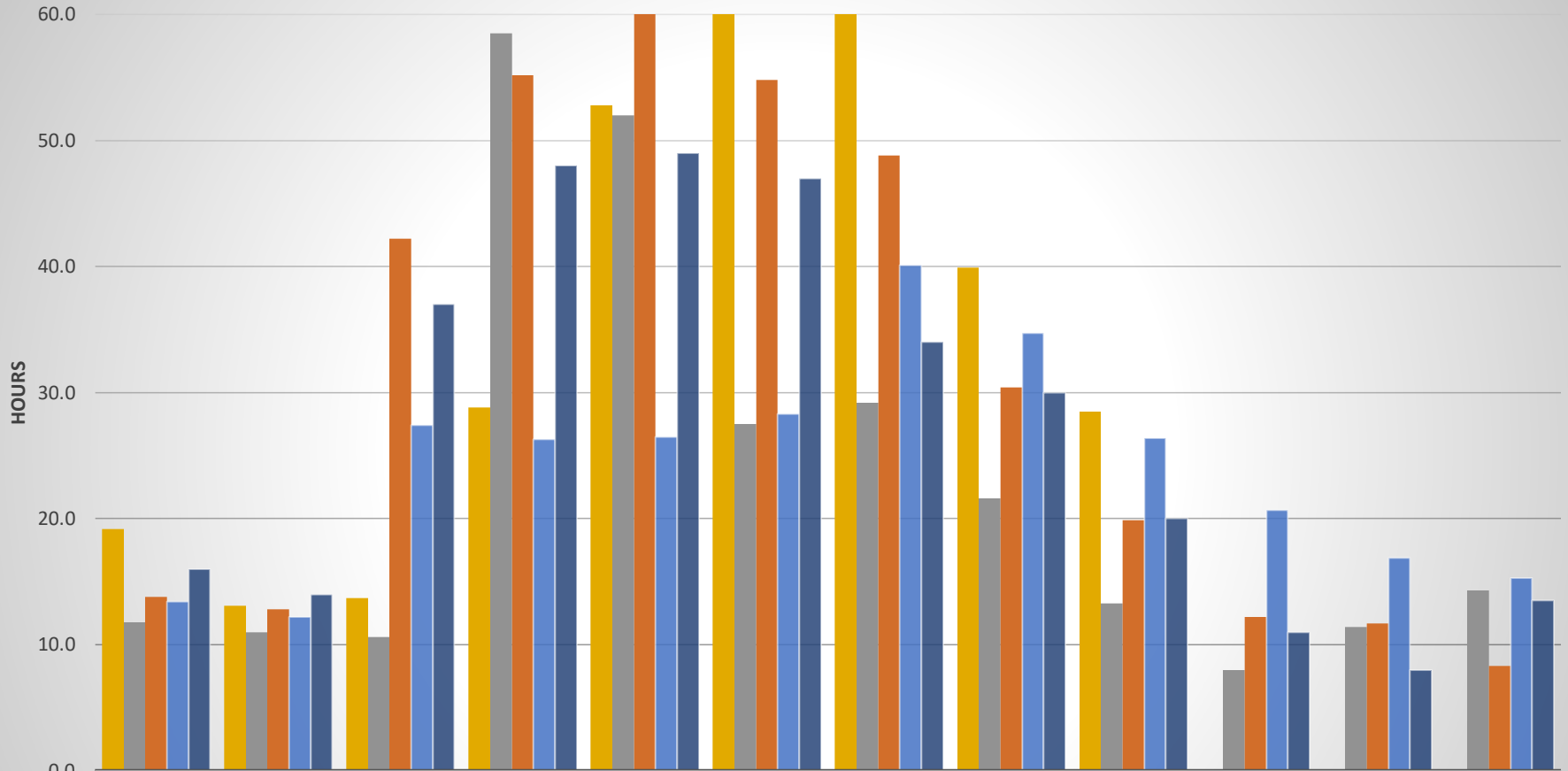
**PICKEREL LAKE SANITARY DISTRICT  
PUMP RUN TIMES 2019-2024**

**YEARLY PUMP SUMMARY  
2019-2023**



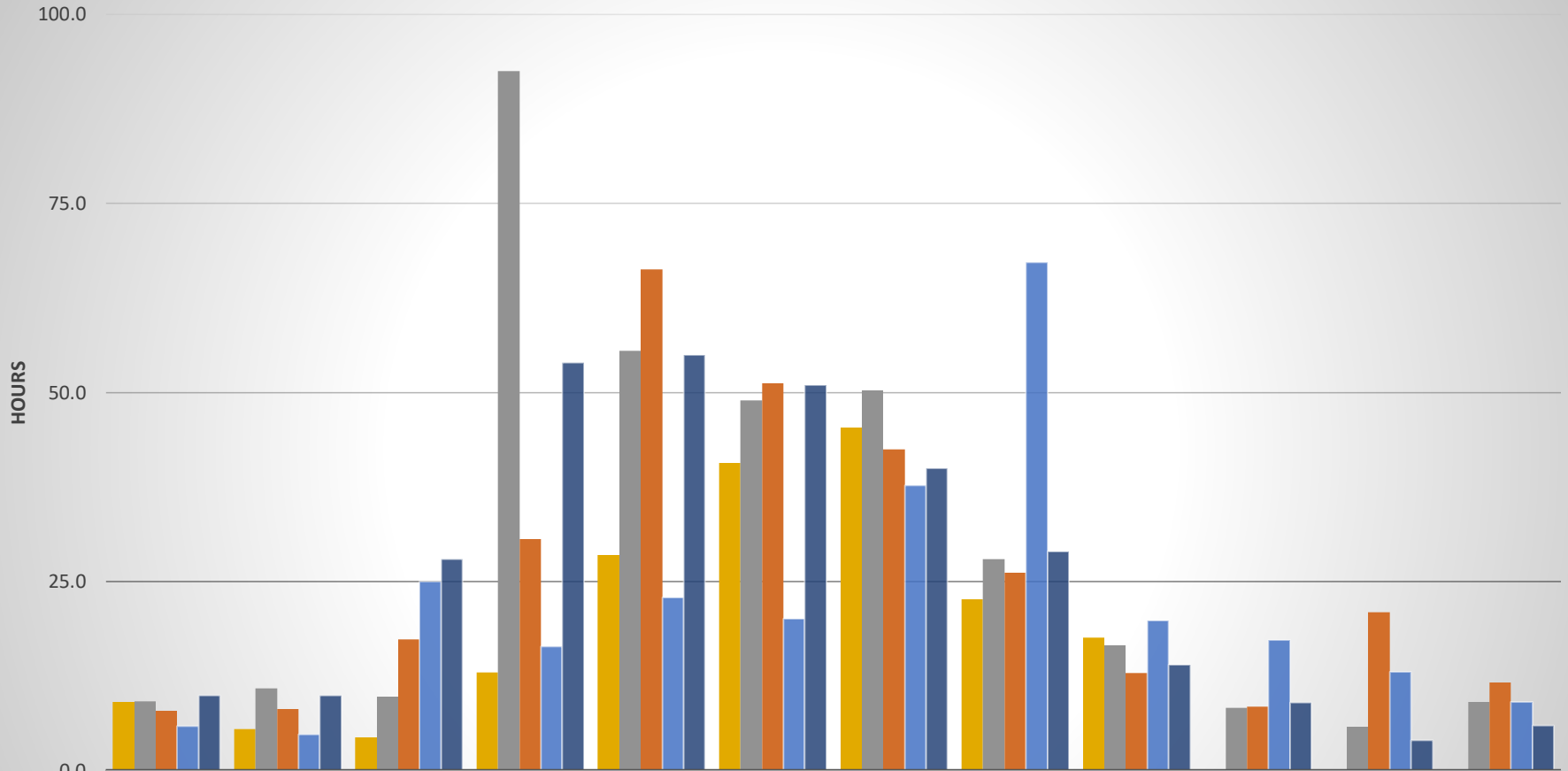
	PUMP 1	PUMP 2	PUMP 3	PUMP 4	PUMP 5	PUMP 6	PUMP 7	PUMP 8	PUMP 9	PUMP 10	PUMP 11	PUMP 12	PUMP 13
2023	269.2	345.0	282.1	213.9	167.0	172.2	82.6	80.8	247.2	49.9	849.7	10.8	452.8
2022	408.6	304.4	399.5	262.6	197.6	224.0	78.1	94.8	272.2	89.7	1775.9	24.5	692.4
2021	288.2	259.4	289.4	148.0	150.5	181.4	150.6	111.0	203.7	61.4	790.9	17.7	598.6
2020	327.5	310	412	180.8	197.5	199.2	111.5	143.6	233.8	166.5	859.3	28.4	586.7
2019	392.8	356.5	510.6	384	288.2	309	105.9	132	264.5	239.3	1168	20.6	2314.5

## Pumps #1A&B (Main Lift) Analysis Chart South End



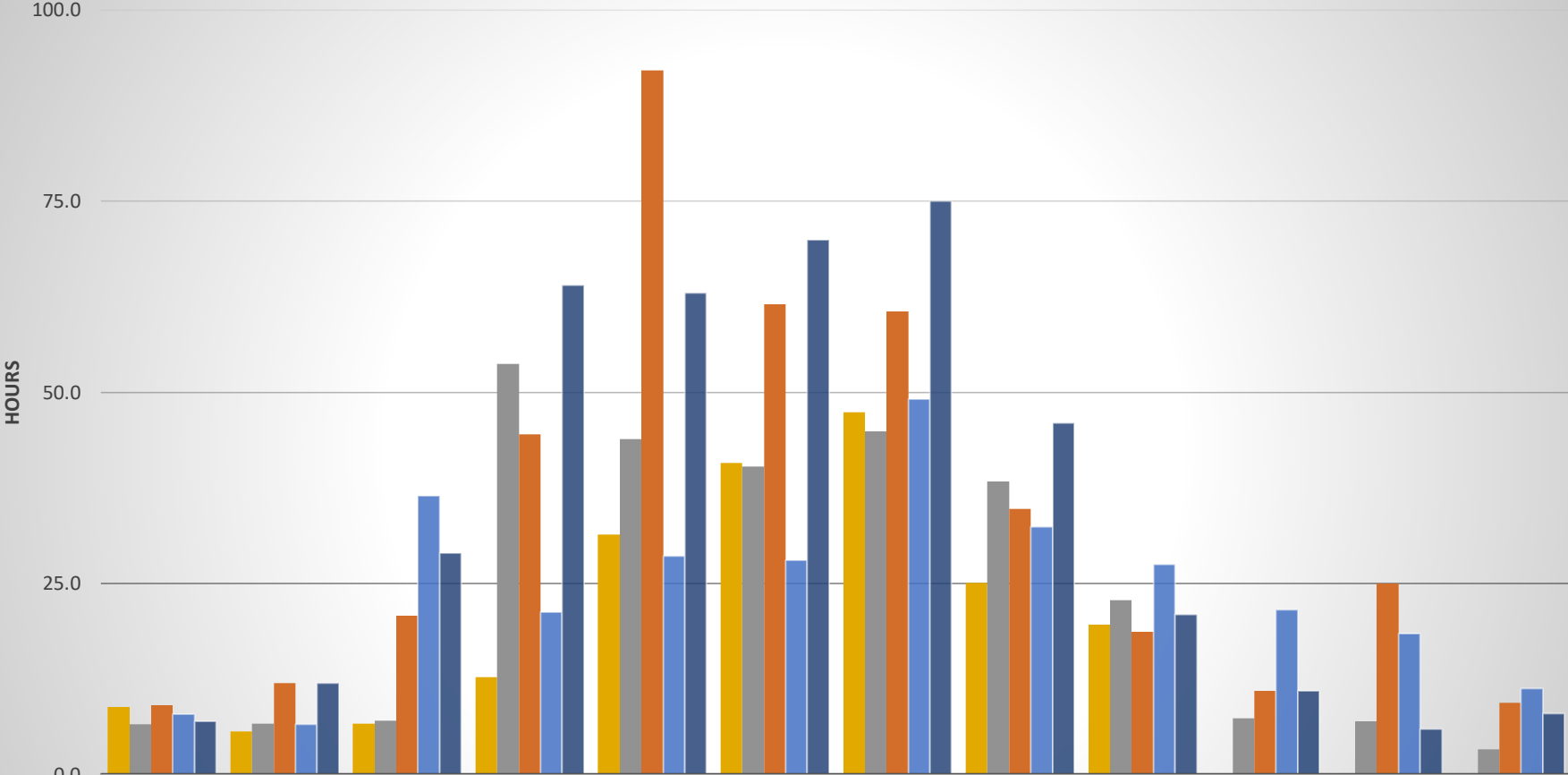
	JAN	FEB	MAR	APR	MAY	JUN	JLY	AUG	SEPT	OCT	NOV	DEC
2024	19.2	13.1	13.7	28.8	52.8	69.5	68.8	39.9	28.5			
2023	11.8	11.0	10.6	58.5	52.0	27.5	29.2	21.6	13.3	8.0	11.4	14.3
2022	13.8	12.8	42.2	55.2	98.5	54.8	48.8	30.4	19.9	12.2	11.7	8.3
2021	13.4	12.2	27.4	26.3	26.5	28.3	40.1	34.7	26.4	20.7	16.9	15.3
2020	16.0	14.0	37.0	48.0	49.0	47.0	34.0	30.0	20.0	11.0	8.0	13.5

## Pump #2 Analysis Chart Peabody Avenue



	JAN	FEB	MAR	APR	MAY	JUN	JLY	AUG	SEP	OCT	NOV	DEC
■ 2024	9.1	5.5	4.4	13.0	28.5	40.7	45.4	22.7	17.6			
■ 2023	9.2	10.9	9.8	92.5	55.5	49.0	50.3	28.0	16.6	8.3	5.8	9.1
■ 2022	7.9	8.2	17.4	30.6	66.3	51.2	42.5	26.2	12.9	8.5	21.0	11.7
■ 2021	5.9	4.8	25.0	16.4	22.9	20.1	37.7	67.2	19.9	17.3	13.1	9.1
■ 2020	10.0	10.0	28.0	54.0	55.0	51.0	40.0	29.0	14.0	9.0	4.0	6.0

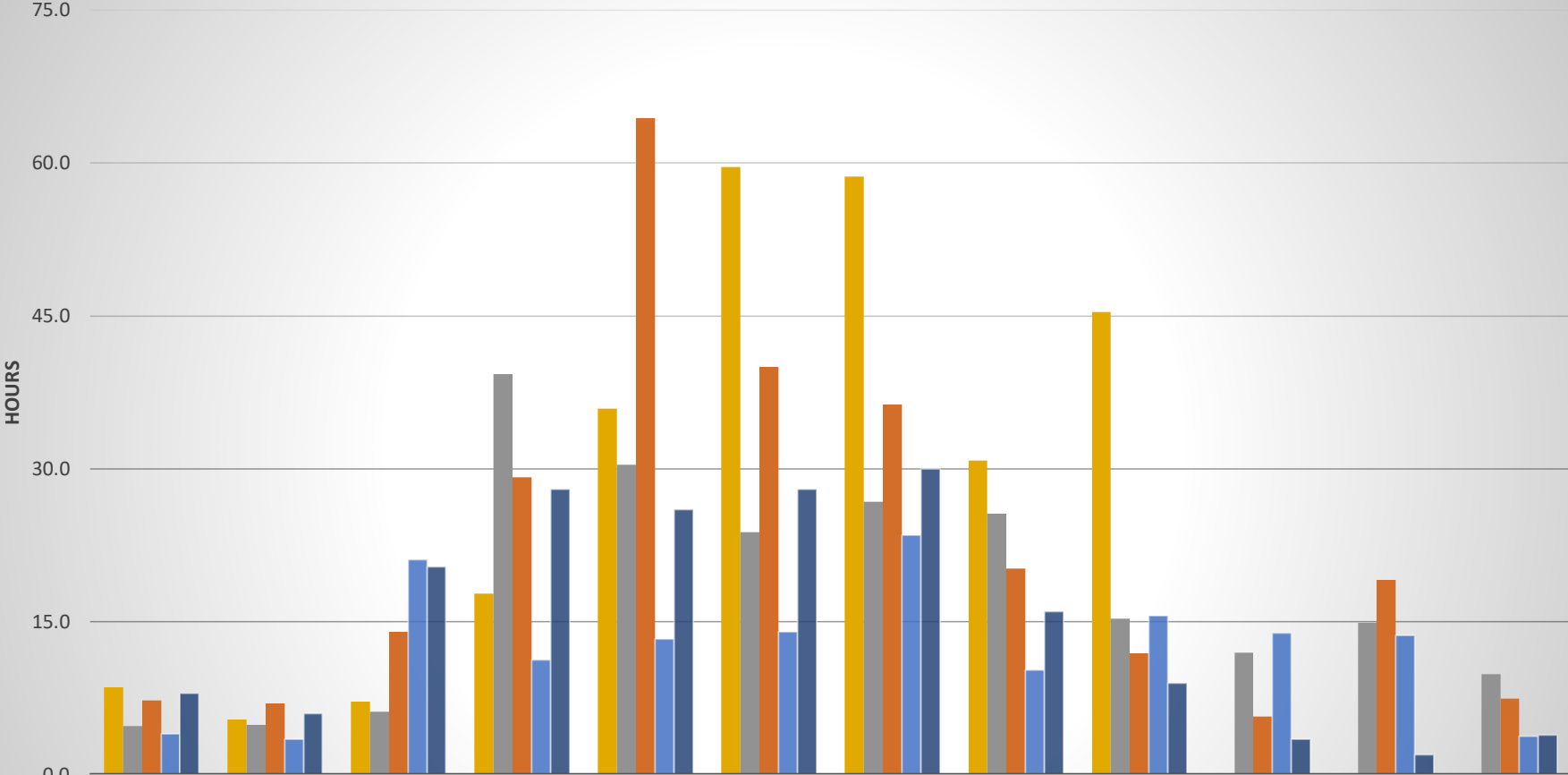
# Pump #3 Monthly Analysis Ramona Beach



	JAN	FEB	MAR	APR	MAY	JUN	JULY	AUG	SEP	OCT	NOV	DEC
■ 2024	8.9	5.7	6.7	12.8	31.4	40.8	47.4	25.1	19.6			
■ 2023	6.6	6.7	7.1	53.7	43.9	40.3	44.9	38.4	22.8	7.4	7.0	3.3
■ 2022	9.1	12.0	20.8	44.5	92.1	61.5	60.6	34.8	18.7	11.0	25.0	9.4
■ 2021	7.9	6.6	36.5	21.3	28.6	28.1	49.1	32.4	27.5	21.6	18.5	11.3
■ 2020	7.0	12.0	29.0	64.0	63.0	70.0	75.0	46.0	21.0	11.0	6.0	8.0

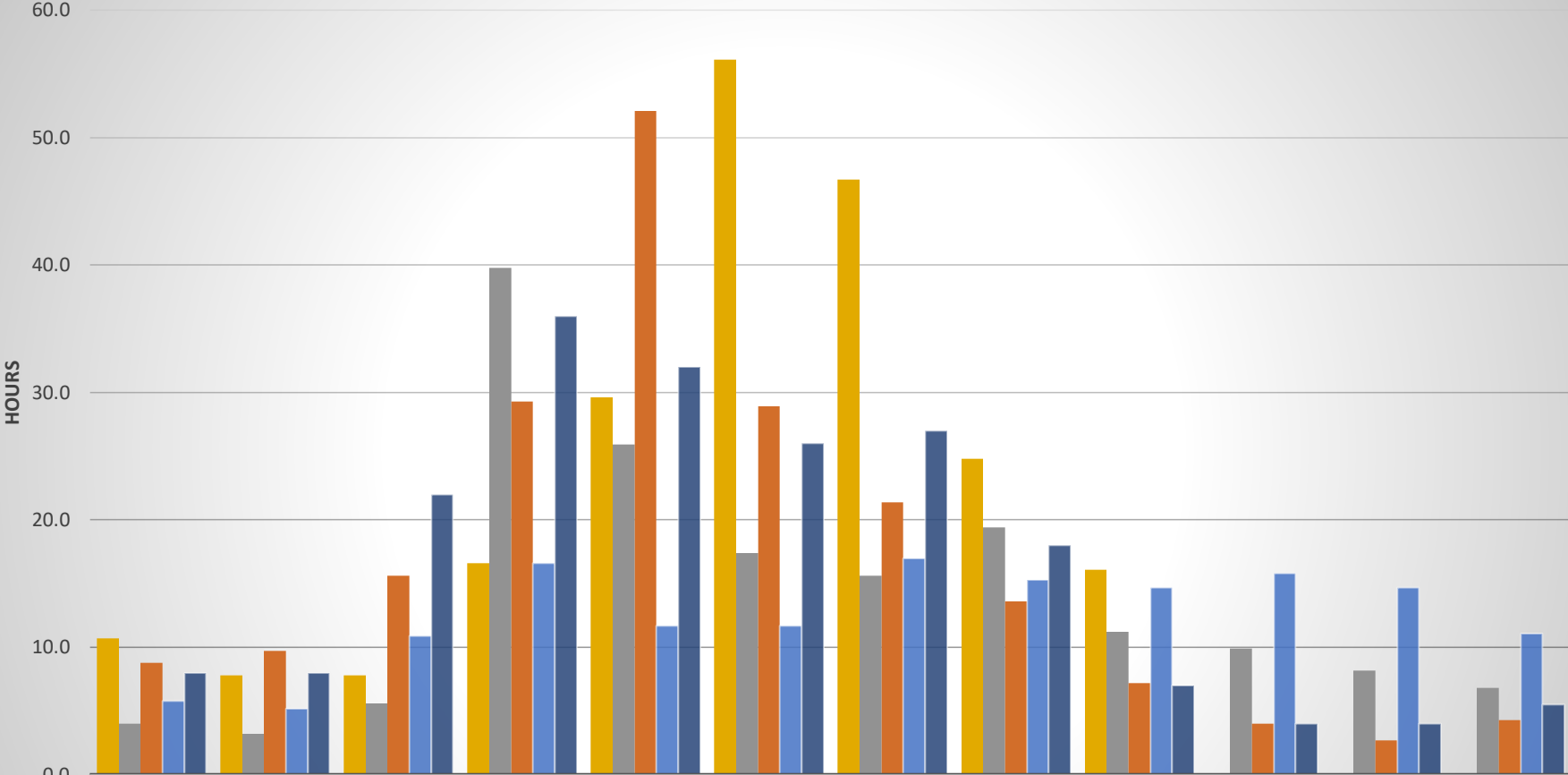
# Pump #4 Monthly Analysis

## Rix Road



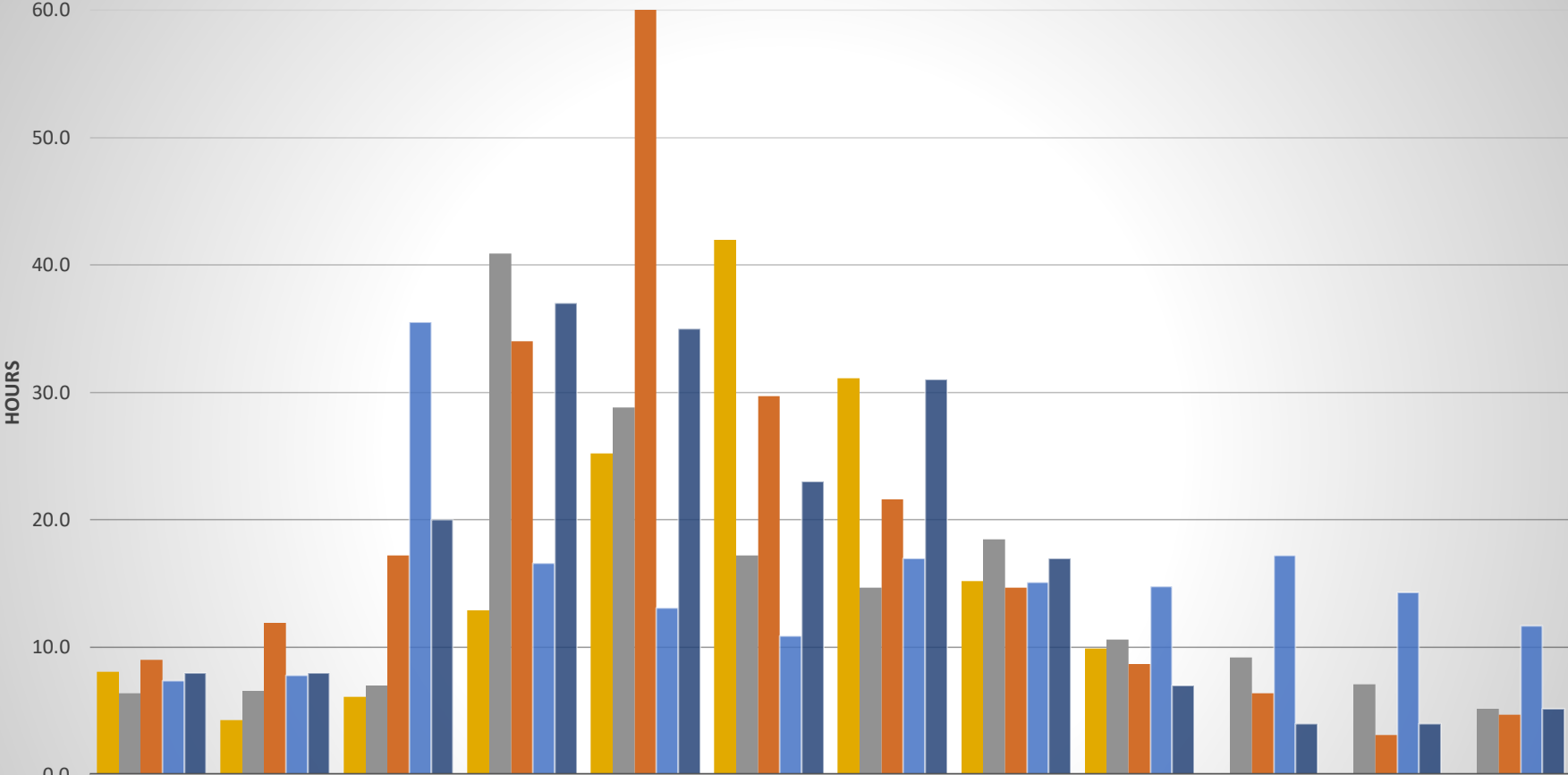
	JAN	FEB	MAR	APR	MAY	JUN	JLY	AUG	SEP	OCT	NOV	DEC
2024	8.6	5.4	7.2	17.8	35.9	59.6	58.7	30.8	45.4			
2023	4.8	4.9	6.2	39.3	30.4	23.8	26.8	25.6	15.3	12.0	14.9	9.9
2022	7.3	7.0	14.0	29.2	64.4	40.0	36.3	20.2	11.9	5.7	19.1	7.5
2021	4.0	3.5	21.1	11.3	13.3	14.0	23.5	10.3	15.6	13.9	13.7	3.8
2020	8.0	6.0	20.4	28.0	26.0	28.0	30.0	16.0	9.0	3.5	2.0	3.9

# Pump #5 Monthly Analysis Block



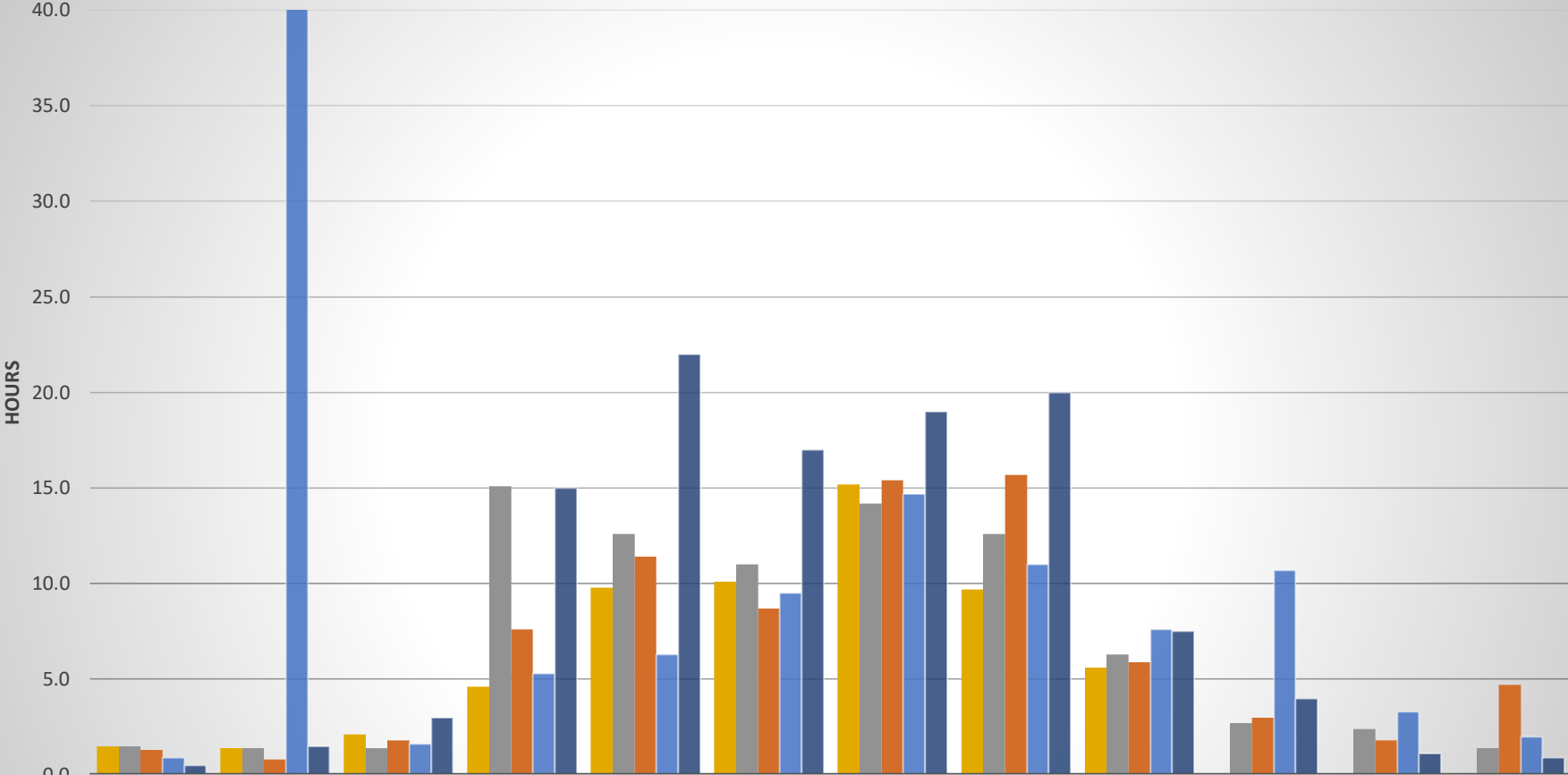
	JAN	FEB	MAR	APR	MAY	JUNE	JLY	AUG	SEP	OCT	NOV	DEC
2024	10.7	7.8	7.8	16.6	29.6	56.1	46.7	24.8	16.1			
2023	4.0	3.2	5.6	39.8	25.9	17.4	15.6	19.4	11.2	9.9	8.2	6.8
2022	8.8	9.7	15.6	29.3	52.1	28.9	21.4	13.6	7.2	4.0	2.7	4.3
2021	5.8	5.2	10.9	16.6	11.7	11.7	17.0	15.3	14.7	15.8	14.7	11.1
2020	8.0	8.0	22.0	36.0	32.0	26.0	27.0	18.0	7.0	4.0	4.0	5.5

# Pump #6 Monthly Analysis North Pickerel



	JAN	FEB	MAR	APR	MAY	JUNE	JLY	AUG	SEP	OCT	NOV	DEC
2024	8.1	4.3	6.1	12.9	25.2	42.0	31.1	15.2	9.9			
2023	6.4	6.6	7.0	40.9	28.8	17.2	14.7	18.5	10.6	9.2	7.1	5.2
2022	9.0	11.9	17.2	34.0	63.0	29.7	21.6	14.7	8.7	6.4	3.1	4.7
2021	7.4	7.8	35.5	16.6	13.1	10.9	17.0	15.1	14.8	17.2	14.3	11.7
2020	8.0	8.0	20.0	37.0	35.0	23.0	31.0	17.0	7.0	4.0	4.0	5.2

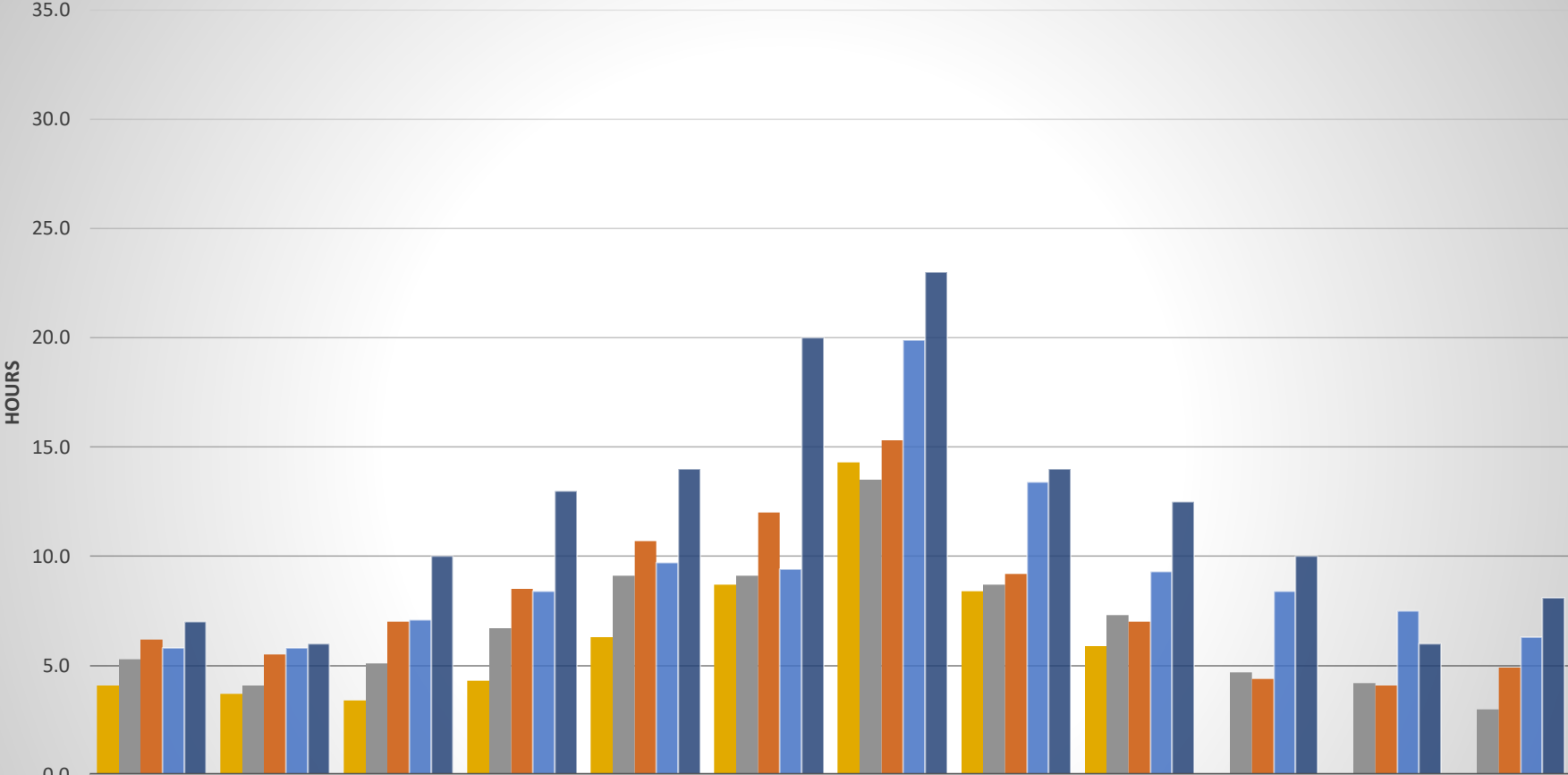
# Pump #7 Monthly Analysis Y Point



	JAN	FEB	MAR	APR	MAY	JUNE	JLY	AUG	SEP	OCT	NOV	DEC
2024	1.5	1.4	2.1	4.6	9.8	10.1	15.2	9.7	5.6			
2023	1.5	1.4	1.4	15.1	12.6	11.0	14.2	12.6	6.3	2.7	2.4	1.4
2022	1.3	0.8	1.8	7.6	11.4	8.7	15.4	15.7	5.9	3.0	1.8	4.7
2021	0.9	77.7	1.6	5.3	6.3	9.5	14.7	11.0	7.6	10.7	3.3	2.0
2020	0.5	1.5	3.0	15.0	22.0	17.0	19.0	20.0	7.5	4.0	1.1	0.9

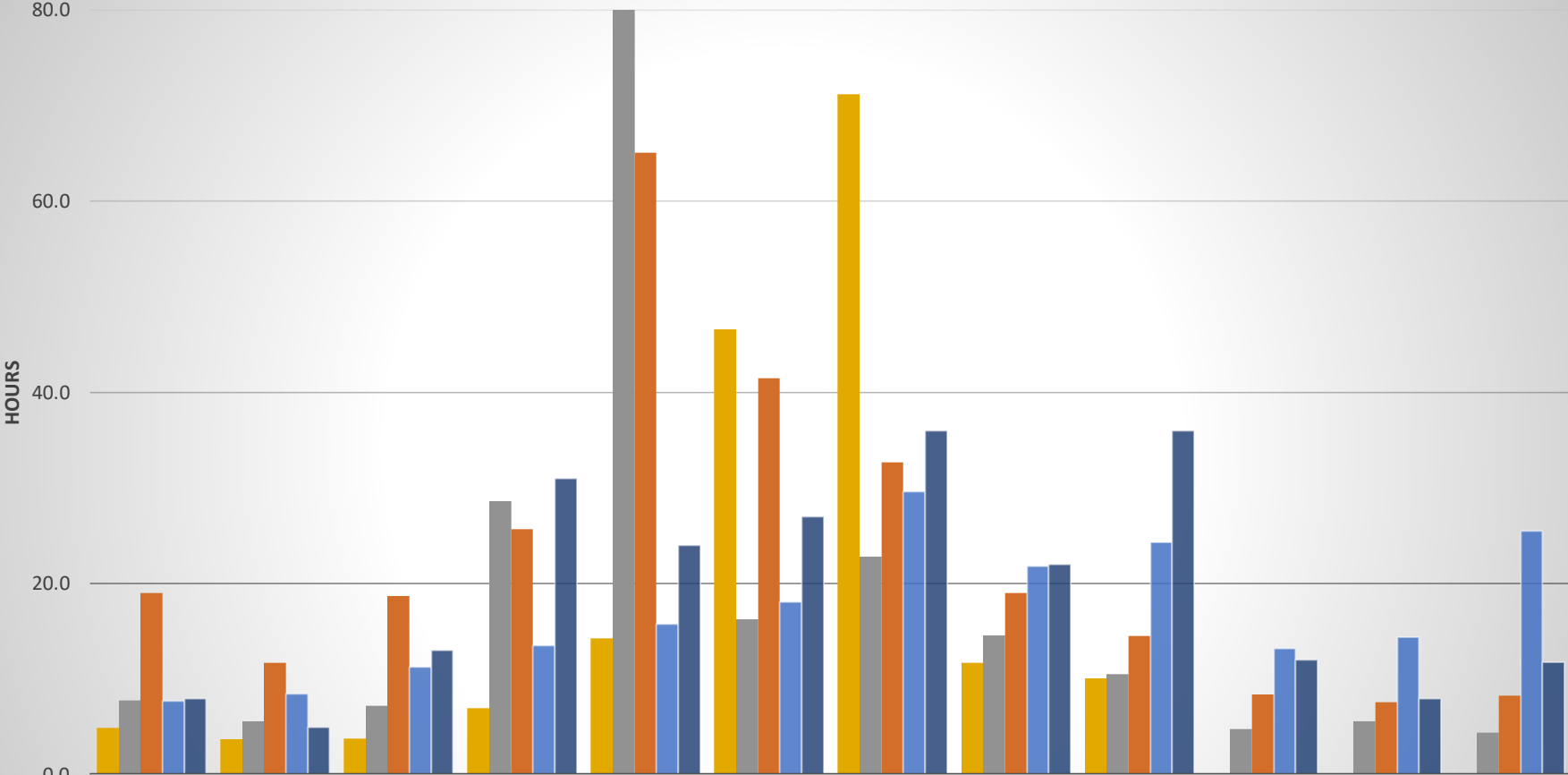


# Pump #8 Monthly Analysis Bass Beach



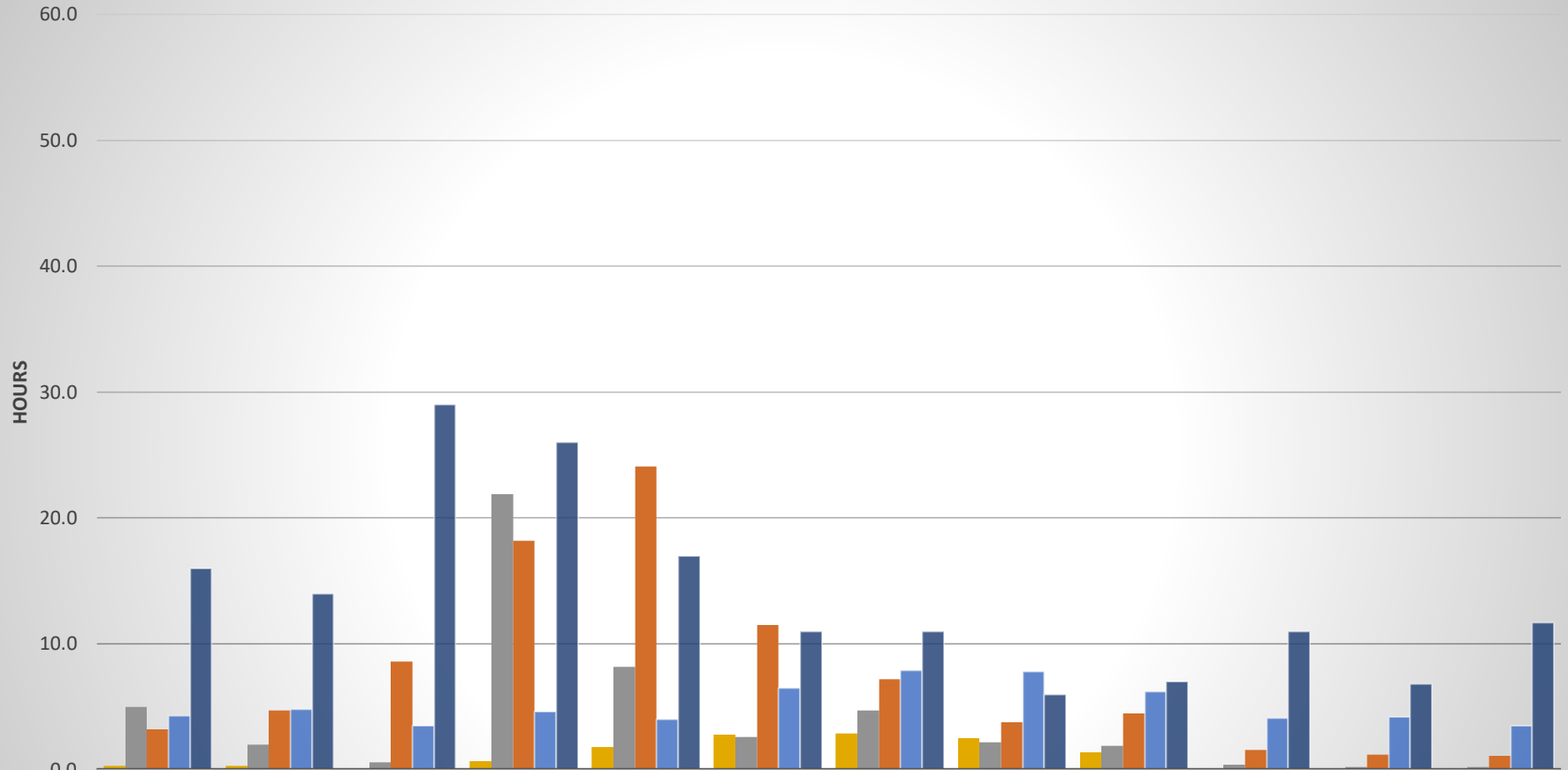
	JAN	FEB	MAR	APR	MAY	JUNE	JLY	AUG	SEP	OCT	NOV	DEC
2024	4.1	3.7	3.4	4.3	6.3	8.7	14.3	8.4	5.9			
2023	5.3	4.1	5.1	6.7	9.1	9.1	13.5	8.7	7.3	4.7	4.2	3.0
2022	6.2	5.5	7.0	8.5	10.7	12.0	15.3	9.2	7.0	4.4	4.1	4.9
2021	5.8	5.8	7.1	8.4	9.7	9.4	19.9	13.4	9.3	8.4	7.5	6.3
2020	7.0	6.0	10.0	13.0	14.0	20.0	23.0	14.0	12.5	10.0	6.0	8.1

# Pump #9 Monthly Analysis Chekapa Bay



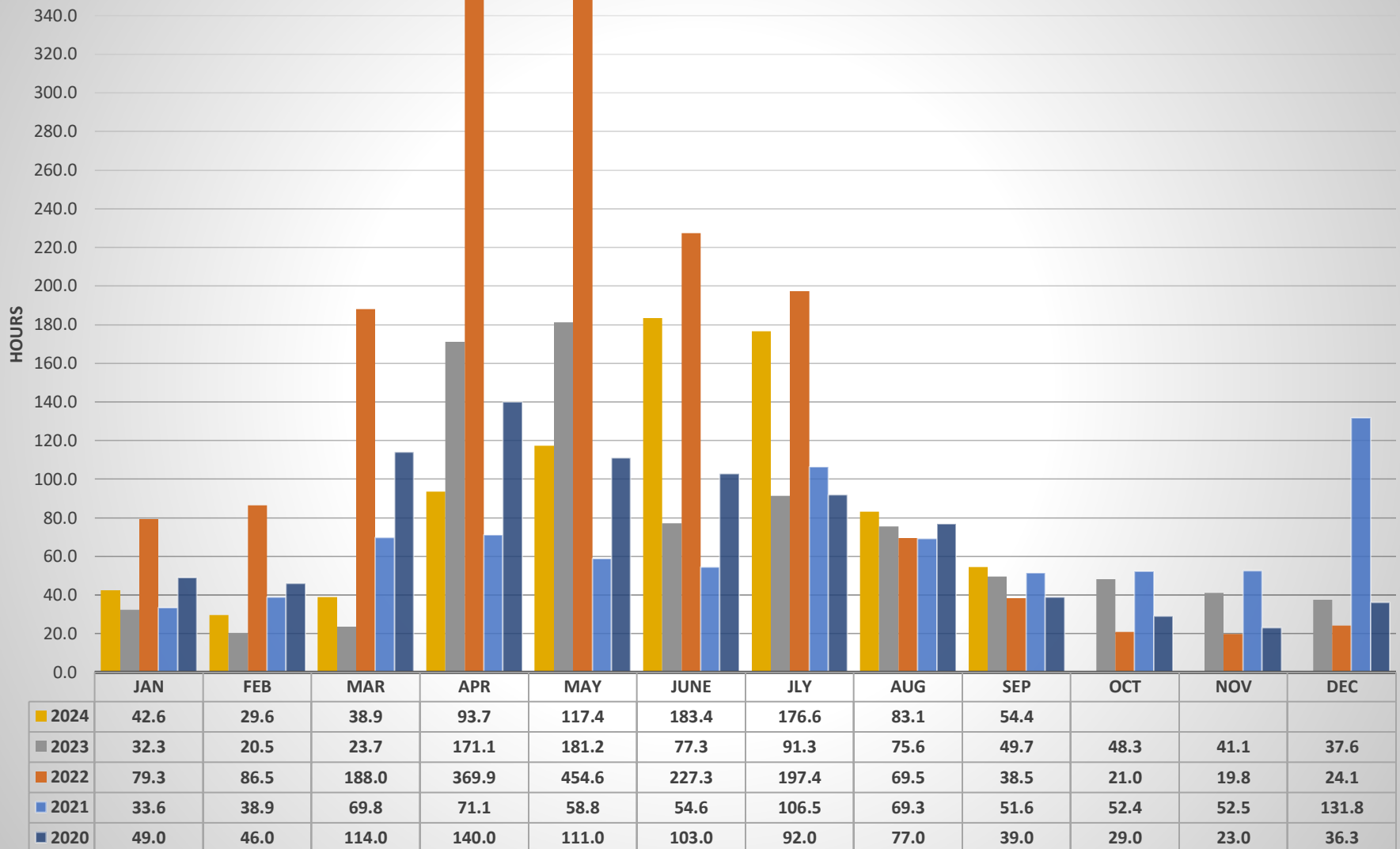
	JAN	FEB	MAR	APR	MAY	JUNE	JLY	AUG	SEP	OCT	NOV	DEC
2024	4.9	3.7	3.8	7.0	14.3	46.6	71.2	11.7	10.1			
2023	7.8	5.6	7.2	28.6	119.0	16.3	22.8	14.6	10.5	4.8	5.6	4.4
2022	19.0	11.7	18.7	25.7	65.1	41.5	32.7	19.0	14.5	8.4	7.6	8.3
2021	7.7	8.5	11.3	13.5	15.8	18.1	29.6	21.8	24.3	13.2	14.4	25.5
2020	8.0	5.0	13.0	31.0	24.0	27.0	36.0	22.0	36.0	12.0	8.0	11.8

## Pump #10 Monthly Analysis N. Hyde Park

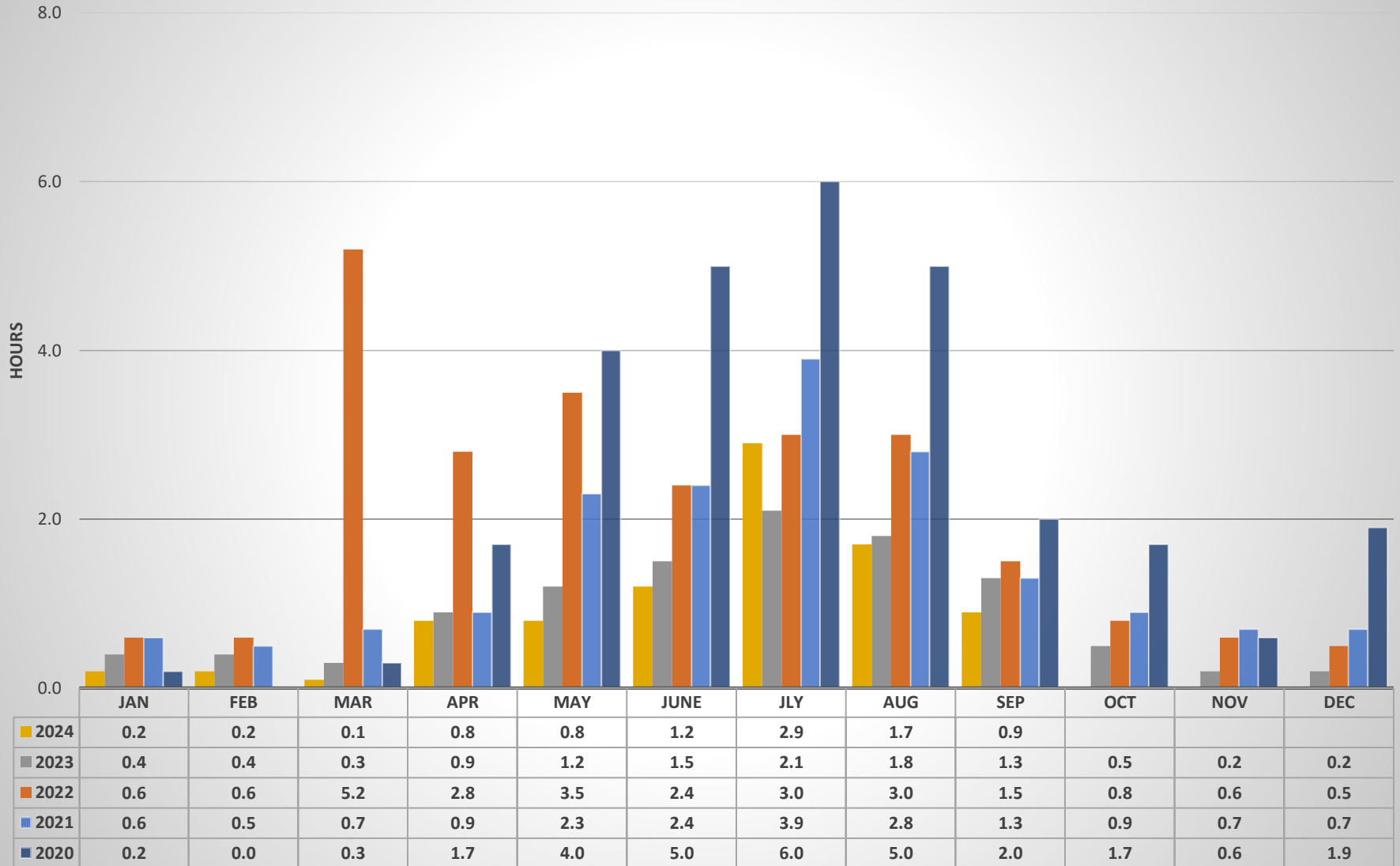


	JAN	FEB	MAR	APR	MAY	JUNE	JLY	AUG	SEP	OCT	NOV	DEC
2024	0.3	0.3	0.1	0.7	1.8	2.8	2.9	2.5	1.4			
2023	5.0	2.0	0.6	21.9	8.2	2.6	4.7	2.2	1.9	0.4	0.2	0.2
2022	3.2	4.7	8.6	18.2	24.1	11.5	7.2	3.8	4.5	1.6	1.2	1.1
2021	4.3	4.8	3.5	4.6	4.0	6.5	7.9	7.8	6.2	4.1	4.2	3.5
2020	16.0	14.0	29.0	26.0	17.0	11.0	11.0	6.0	7.0	11.0	6.8	11.7

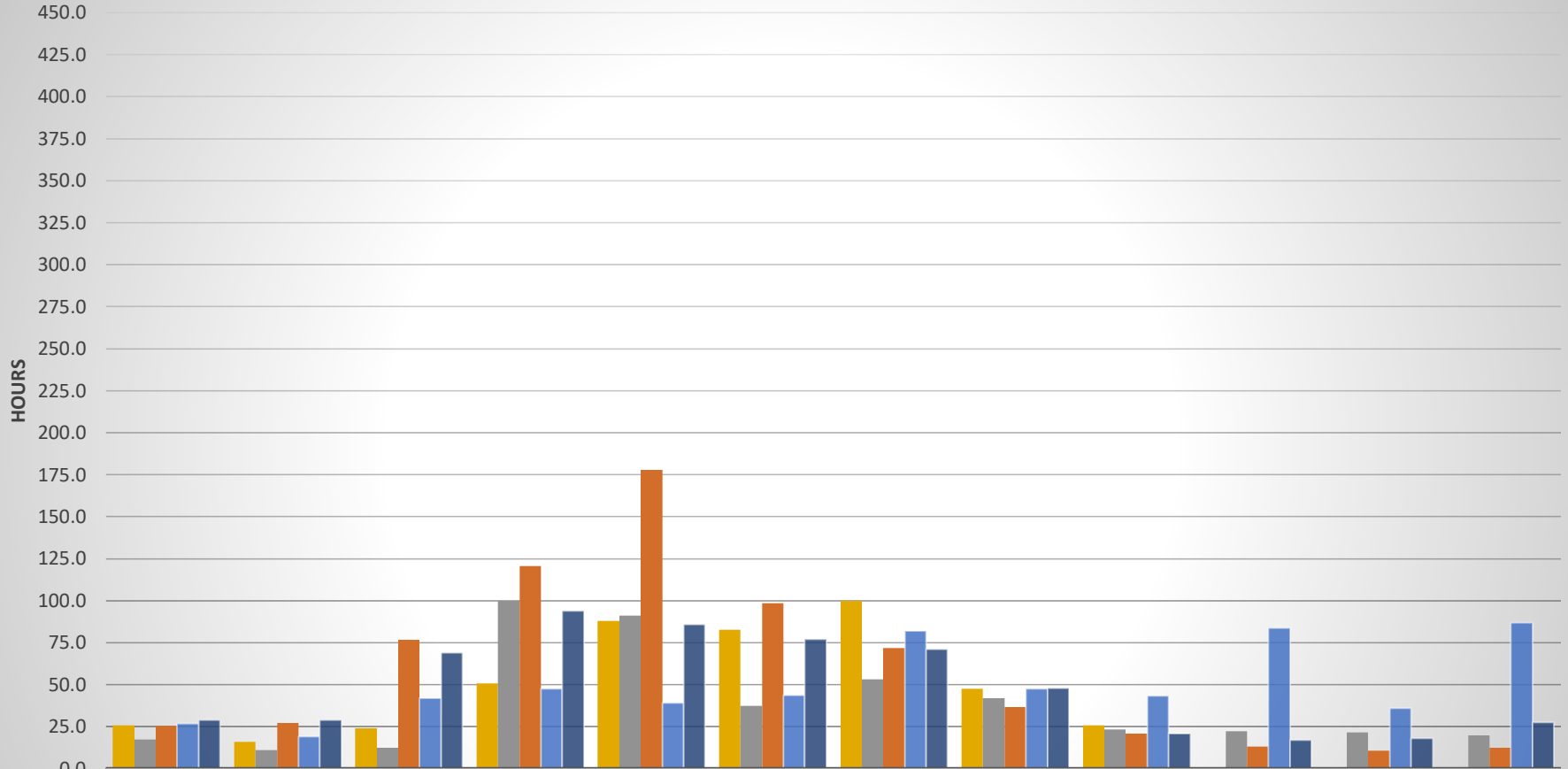
## Pump #11 Monthly Analysis Hyde Park



## Pump #12 Monthly Analysis S. Hyde Park



## Pump #13 Monthly Analysis East State Park



	JAN	FEB	MAR	APR	MAY	JUNE	JLY	AUG	SEP	OCT	NOV	DEC
■ 2024	25.8	15.9	24.2	50.8	88.0	82.9	99.8	47.7	26.0			
■ 2023	17.5	11.3	12.4	99.9	91.3	37.3	53.4	42.1	23.5	22.5	21.6	20.0
■ 2022	25.5	27.2	76.7	120.5	178.0	98.4	72.0	36.8	20.8	13.1	10.8	12.6
■ 2021	26.9	19.2	42.1	47.6	39.2	43.7	82.2	47.5	43.6	83.7	36.0	86.9
■ 2020	29.0	29.0	69.0	94.0	86.0	77.0	71.0	48.0	21.0	17.0	18.0	27.7